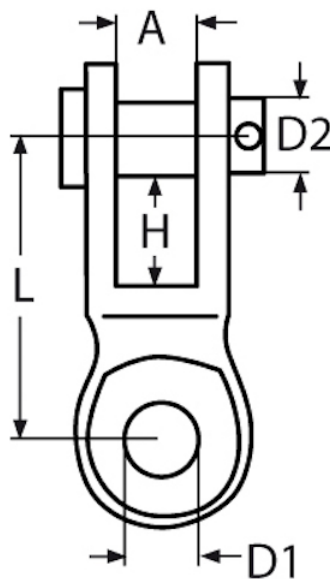


Stainless Steel Rigging Toggles



Product Name	A (mm)	L (mm)	H (mm)	D1 (mm)	D2 (mm)
5mm Stainless Steel Toggle	6	22	7	5.5	5.2
6mm Stainless Steel Toggle	7	27	9	6.6	6.3
8mm Stainless Steel Toggle	10	31	10	8.5	8.3
10mm Stainless Steel Toggle	12	36	12	10	9.3
12mm Stainless Steel Toggle	13	50	17	13	12.4

Note - Product sizes are liable to change from time to time, if your dimension requirements are critical, please contact us.